

C A C T U S R O W

O Y A R I F A

“The days of acquiring a property just for shelter are long gone. It is now an investment.
Thus, the major consideration should be value that lasts generations”.



Cactus Row, our contemporary townhouses are designed to match your desired dream lifestyle. It is located within the safe and serene Oyarifa community; a five-minute drive from the Oyarifa Mall and ten-minute drive from the Presidential Peduase Lodge. This development has two spacious detached townhouses each having a total floor area of 200sqm or 2152.78 square feet. Every unit comes with four en-suite spacious bedrooms, a wide-open living and dining space, family area, and a fully fitted ultra-modern kitchen with a generous storage space, ample parking space and elaborate landscaping. Its Unique form and finish creates a style so timeless.

- Plot size* size 35ft x 90ft (approximately)
- Detached building of 200 square meters (approximately)
- 4 bedrooms
- 4.5 washrooms
- AC installed in living area and master bedroom
- Air condition preinstalled for all other rooms
- Powder coated aluminium sliding windows and doors with fly screen
- Fitted plaster board ceiling for all rooms
- Fully fitted kitchen cabinet (excl. appliances)
- Provision for a walk-in closet for master bedroom and wall mount wardrobe for other rooms (excl. wardrobe cabinets)
- Elaborate external soft and hard landscape
- Installed secondary water storage systems
- Connection to electricity and water supply (national grid)
- Installed automated sliding gate
- Electrical fencing
- Provision for generator connection





PLOT SIZE : 90ft by 70ft

 4 bedroom units

 Spacious Car Park

 Soft landscaping (greenery)

 Serene environment



Gross Area : 100m² /1076.39 ft²

- | | | | |
|-------------------------|----------|-----------------|---------|
| 1. Entrance Porch | : 3msq. | 5. Kitchen | :13msq. |
| 2. Living area & Dining | : 37msq. | 6. Bedroom 01 | :14msq. |
| 3. Stairs | : 7 msq. | 7. Washroom | : 4msq. |
| 4. Store | :4msq. | 8. Guest toilet | : 2msq. |



Gross Area : 100m² /1076.39 ft²

- | | | | | | |
|----------------|-----------|-------------------|----------|------------|---------|
| 1. Family area | : 16msq. | 5. Washroom | : 4msq. | 9. Balcony | : 7msq. |
| 2. Washroom | : 4msq. | 6. Walk-in closet | : 5msq. | | |
| 3. Bedroom 02 | : 14 msq. | 7. Washroom | : 5msq. | | |
| 4. Bedroom 03 | : 15msq. | 8. Master Bedroom | : 20msq. | | |



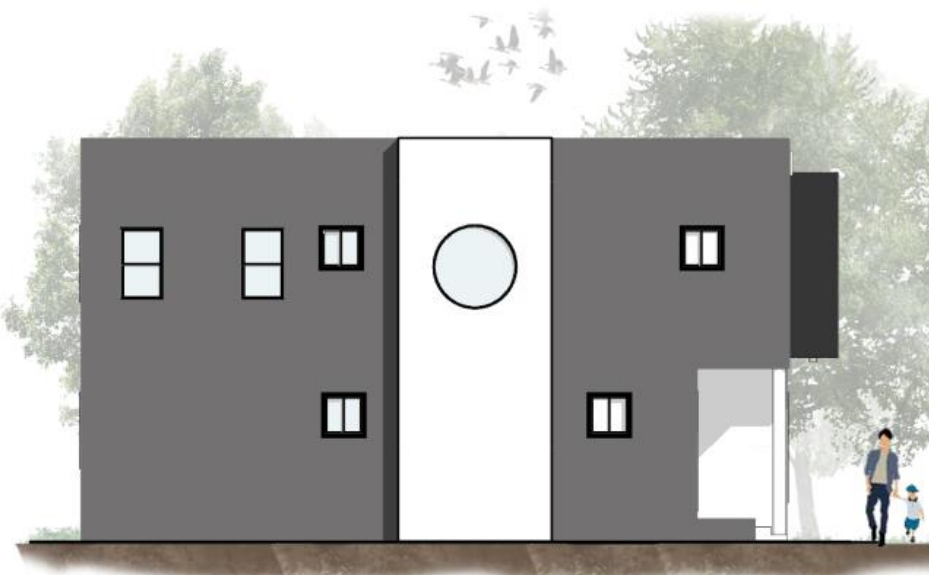
Front View



Left side View



Back View



Right side View







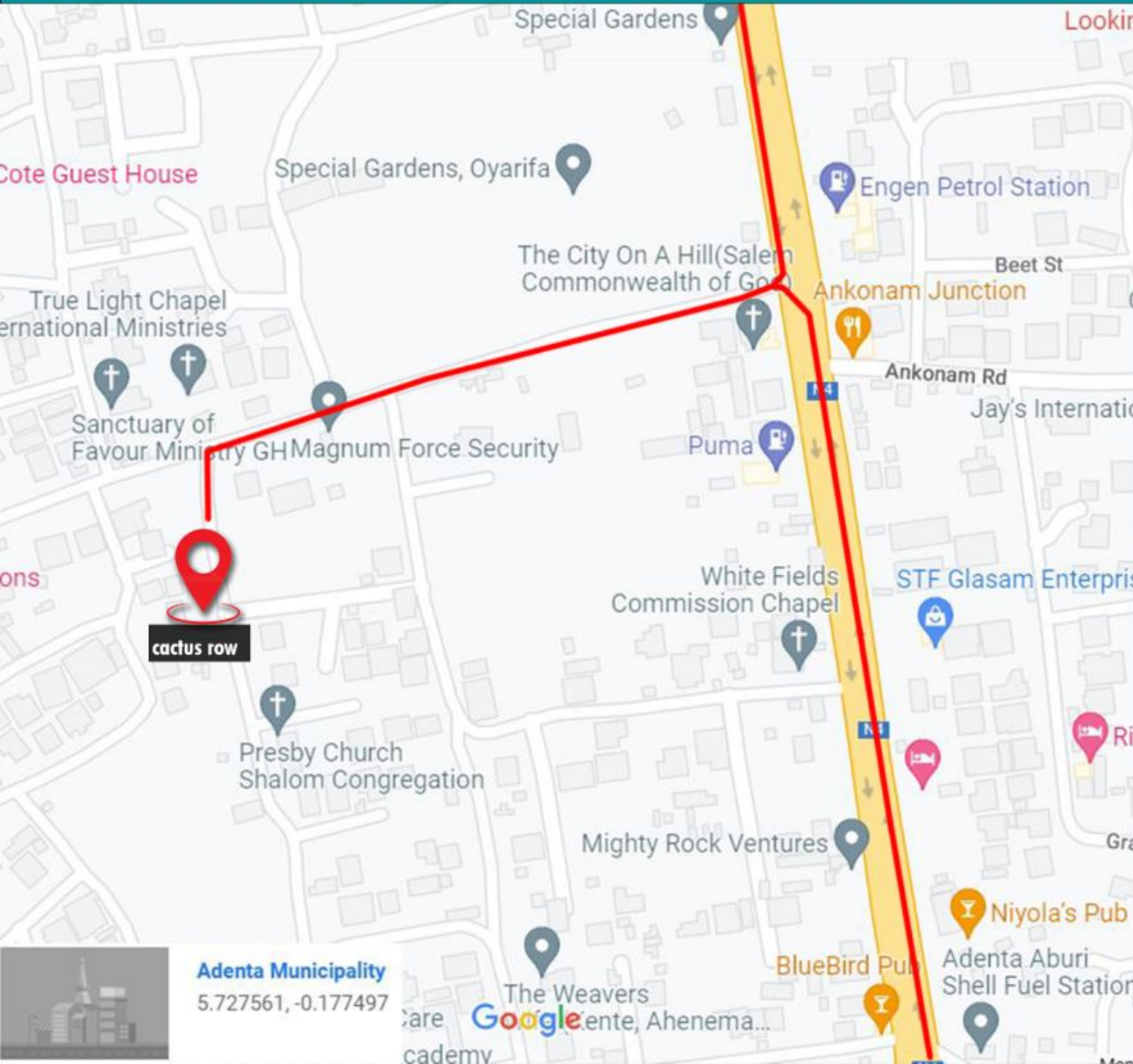












Driving Distance from Cactus Row to

- Oyarifa Mall (5 minutes)
- Presidential Peduase Lodge (10 minutes)
- Beacon International School (10 minutes)
- Adenta Police Station (5minutes)

Adenta Municipality
5.727561, -0.177497





- **Direct Payment to MultiSpace**

We have a flexible payment plan which is scheduled as follows.

Percentage	Development milestones
45%	initial payment
45%	payment after roofing
10%	final payment upon handing over

We are opened to discuss a suitable payment structure to match your cash flow

- **Mortgages**

We can recommend you to any of our mortgage partners who can assist in the payment on your behalf should you meet their terms and conditions.

The logo for Ecobank, featuring the word "Ecobank" in a blue serif font with a curved line above it, and the tagline "The Pan African Bank" in a smaller blue sans-serif font below it.

Ecobank
The Pan African Bank

The logo for Republic Bank Limited, featuring a stylized blue diamond shape composed of four smaller diamonds, and the text "Republic Bank Limited" in a blue sans-serif font below it.

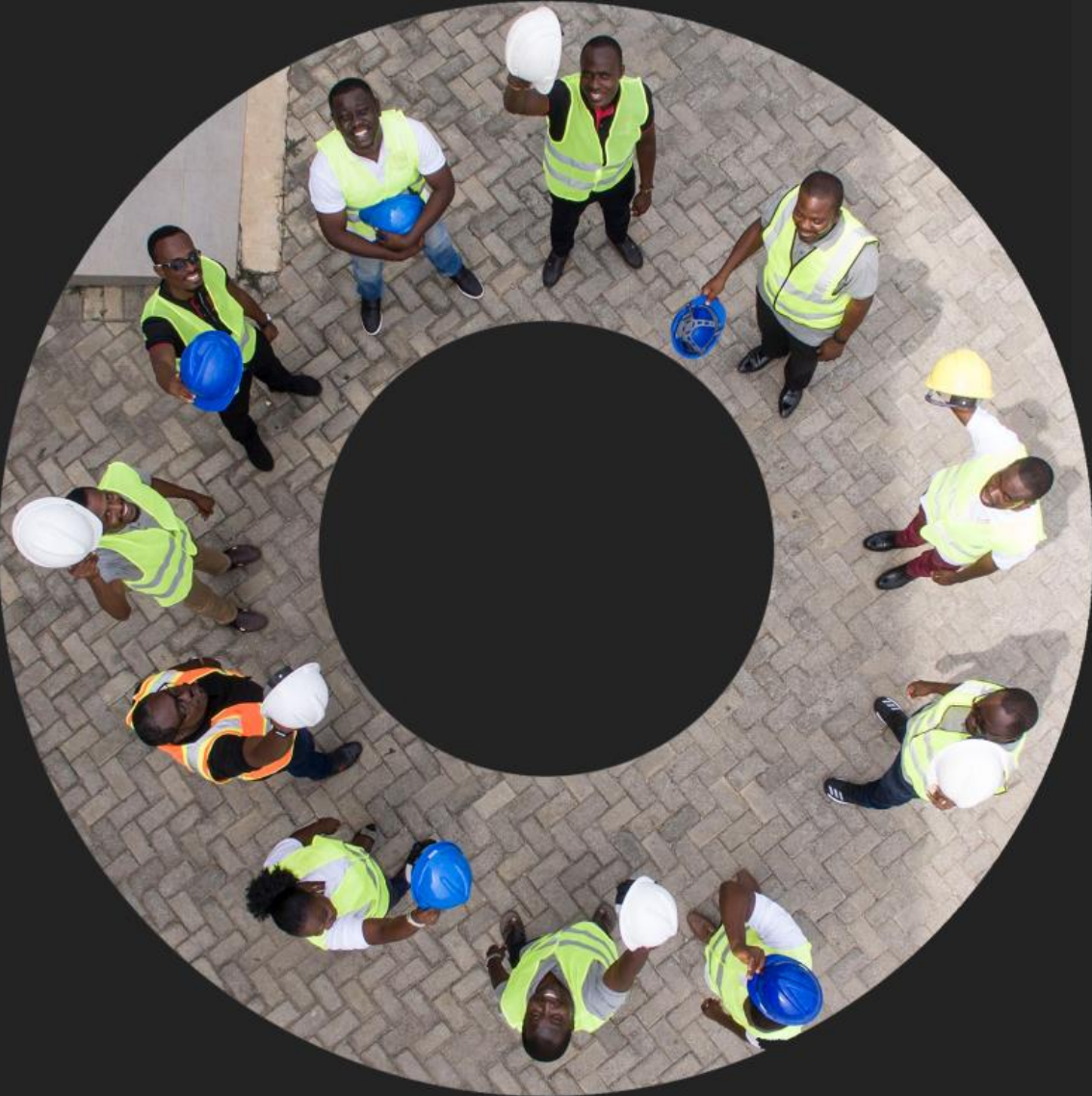
Republic Bank Limited

The logo for FNB (First National Bank), featuring a stylized tree icon in a circle and the text "FNB" in a bold blue sans-serif font, with "First National Bank" in a smaller blue sans-serif font below it.

FNB
First National Bank

The logo for Absa, featuring the word "absa" in a bold red sans-serif font inside a red circular border with a gap at the top.







absa



MultiSpace Limited (a member of the MultiBuild group of companies), is a property development company delivering high value spaces which inspire, uplift, and offer the desired comfort and luxury.

We appreciate the insatiable feeling of family belongingness!

Value engineering sits in the centre of our design and construction process, and this identifies and eliminates avoidable costs and improves function and quality. We pay close attention to the environment and ensure that materials and fittings used are fit for purpose and sustainable. Our properties are unique, functional, and timeless.

 <p>FLORA DRIVE AYIMENSAH</p>	 <p>LOTUS ROW AYIMENSAH</p>	 <p>EAST GATE CLOSE EAST LEGON</p>
<p>SOLD OUT</p>	<p>SOLD OUT</p>	<p>SOLD OUT</p>
 <p>PLATINUM PLACE OYARIFA</p>	 <p>CACTUS ROW OYARIFA</p>	 <p>OAKFIELD COURT ADJIRIGANOR</p>
<p>COMING SOON</p>	<p>COMING SOON</p>	<p>COMING SOON</p>

TALK TO US
www.multispacegh.com
INFO@MULTISPACEGH.COM
+233 (0) 030 294 7859
+233 (0) 20 167 3666

**OFFICE LOCATION: House No. 32 Addis Abba Street, East Legon – Accra
GA – 333 – 7431**

 **MULTISPACE GHANA LIMITED**

 **multispaceghana**

 **multispacegh/ Multispace ghana**

DISCLAIMER: The information on this brochure is presented as general information and no representation or warranty is expressly or impliedly given as to its accuracy, completeness or correctness. The Company reserves the right to terminate, revoke, modify, alter, add and delete any one or more of the terms and conditions outlined in the brochure. The Company shall be under no obligation to notify the user of the amendment to the terms and conditions and the user shall be bound by such amended terms and conditions. Products, features, light fittings, pictures, images, etc. shown as illustrations are for reference only. The colours, shades of walls, tiles etc. shown in the images are for the purpose of representation only and may vary upon actual construction. All images, the interiors and furniture items displayed therein are to give a perspective to the user and are not part of the homes to be sold to the user. The user must verify all the details and specifications, including but not limited to the area, amenities, specifications, services, terms of sales, payments and all other relevant terms independently with our sales/marketing team prior to concluding any decision for buying any unit in any of our developments. By using or accessing the brochure, you agree with the Disclaimer without any qualification or limitation. While enough care is taken by the Company to ensure that information in the brochure are up to date, accurate and correct, the readers & users are requested to make their independent enquiry before relying upon the same.